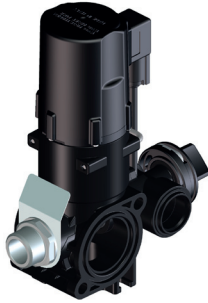
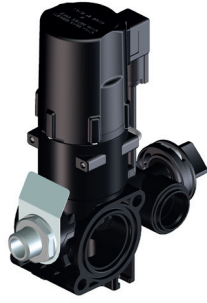


VALVOLE SEZIONE M180 M180 SECTION VALVES



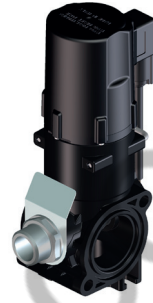
180.1910.2 BH
BY PASS
G3/4M. - 3/4" BSPM.



180.1910.24NE
BY PASS
G1/2M. - 1/2" BSPM.



180.1910.6 HS
DUE VIE - TWO WAYS
G1/2M. - 1/2" BSPM.



180.1910.19HS
DUE VIE - TWO WAYS
G3/4M. - 3/4" BSPM.



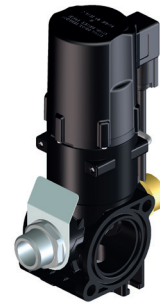
180.1910.6
DUE VIE - TWO WAYS
G1/2M. - 1/2" BSPM.
SMARTSPRAY



180.1910.19
DUE VIE - TWO WAYS
G3/4M. - 3/4" BSPM.
SMARTSPRAY



180.1910.3 HS
ON/OFF
G1/2M. - 1/2" BSPM.



180.1910.4
ON/OFF
G3/4M. - 3/4" BSPM.

